

WILDING CRAN GALLERY

TEN YEARS



Maria Lynch

Glimpse Them, 2016

Acrylic and oil on canvas

30 x 40 inches (76.2 x 101.6 cm.)

(ML008)



Andy Dixon

Small Floral Painting, 2024

Acrylic and oil pastel on canvas

32 x 27 inches (81.3 x 68.6 cm.)

(AD005)



Firooz Zahedi

Flower Vase Study, 2022

Giclee print on archival paper

16 x 20 inches (40.6 x 50.8 cm.)

23 x 27 inches (58.4 x 68.6 cm) (framed)

(FZ0001)



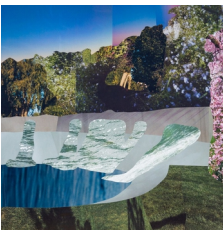
Fran Siegel

Dispersed Painting, 2023

Porcelain form mounted to the wall, pigment and cyanotype on sewn and quilted fabric, scrim

70 x 42 x 16 inches (177.8 x 106.7 x 40.6 cm.)

(FS0061)



Vikky Alexander 1959

Vue de la Salle du Bal, 2021

Inkjet print mounted on dibond

48 x 48 inches 121.92 x 121.92 cm.

Edition 2 of 3

(VA0029.2)

WILDING CRAN GALLERY



Ken Ehrlich

Evaporation Study Tower, Elephant Butte Reservoir, 2023

Archival ink jet print mounted on sintra

26 x 40 inches (66 x 101.6 cm.)

(KE0001)



Bill Anderson

Counterbalance #1, 2008

Archival pigment print on 300 rag paper

22 x 48 inches (55.9 x 121.9 cm.)

(BA002)



Graeme Mitchell

Rock, 2012

7-tone monochrome ink set pigment print on archival cotton paper,

9 x 13 1/2 inches picture (22.9 x 34.3 cm.)

13 x 17 1/2 inches paper (33 x 44.5 cm.)



Lianne Barnes

The Messenger, 2024

Fiberglass

39 x 20 x 18 inches (99.1 x 50.8 x 45.7 cm.)

46 x 36 x 8 inches base (116.8 x 91.4 x 20.3 cm.)

(LB0015)



Jen Stark

Neon Refraction, 2023

Acrylic on wood

24 inches diameter (61 cm.)

(JST0032)

WILDING CRAN GALLERY



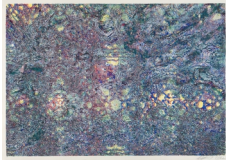
Austin Irving

Wilding Cran Gallery, Los Angeles, CA, 2017

4 x 5 Color Negative - Archival Lightjet Print on Dibond

64 x 48 inches (162.6 x 121.9 cm.)

(AI029)



Martin Werthmann

Presyncope, 2022

Multicolor woodblock print on paper

27½ x 39 ¾ inches (70.00 x 100.00 cm.)

Edition of 50 (#36/50)

(MW0072)



Chris Cran 1949

Untitled (Silver and Blue), 2011

Oil on canvas

36 x 30 inches (91.4 x 76.2 cm.)

(CC0102)



Miya Ando

11.8 Cloud Study, 2023

Ink On Aluminum Composite

12 1/4 x 12 1/4 x 1 1/2 inches (31.1 x 31.1 x 3.8 cm.)

(MA0015)



Miya Ando

11.6 Cloud Study, 2023

Ink On Aluminum Composite

12 1/4 x 12 1/4 x 1 1/2 inches (31.1 x 31.1 x 3.8 cm.)

(MA0017)

WILDING CRAN GALLERY



Miya Ando

11.3 Cloud Study, 2023

Ink On Aluminum Composite

12 1/4 x 12 1/4 x 1 1/2 inches (31.1 x 31.1 x 3.8 cm.)

(MA0018)



Miya Ando

11.9 Cloud Study, 2023

Ink On Aluminum Composite

12 1/4 x 12 1/4 x 1 1/2 inches (31.1 x 31.1 x 3.8 cm.)

(MA0019)



Gary Lang

SONNINGFOUR, 2023

Acrylic on canvas

54 inches diameter (137.2 cm. diameter)

(GL0077)



Stephen Neidich

I Think I Found Your Problem, 2018

PETG plastic, car muffler

31 x 23 x 49 inches (78.7 x 58.4 x 124.5 cm.)

(SN009)



Jason McLean 1971

Low Down on Hollywood, 2014

Acrylic ink on found photo

6 1/2 x 4 inches (16.5 x 10.2 cm.)

(JM027)

WILDING CRAN GALLERY



Hap Tivey

Copper, Brass, Red Wood, 1976

Red Wood, acrylic, copper, brass

41 x 29 x 3 inches (104.1 x 73.7 x 7.6 cm.)

(HT0003)



Jeremy Everett

Avenue K Flare Diptych #1, 2021

Pigment on canvas

22 x 17 inches (each) (55.9 x 43.2 cm.)

(JE0041)



Grant Shumate

Reptilian Road, 2020-2023

Acrylic mediums and silkscreen ink on canvas

16 x 16 inches (40.6 x 40.6 cm.)

(GS0026)



Thomas Linder

Two Suns Melt Away for the Day, 2024

Fiberglass, pigment, aluminum frame

24 x 30 inches (61 x 76.2 cm.)

(TL0001)



Marwa Abdul-Rahman

Sleep and Glory, 2024

Mixed media

37 x 39 x 6 inches (91.4 x 99.1 x 15.2 cm.)

(MAR007)



Michael Cran

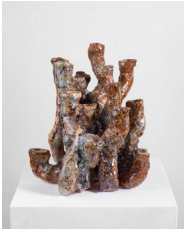
Fisher 1, 2018

Redwood and steel

82 x 29 x 14 inches (208.3 x 73.7 x 35.6 cm.)

(MC012)

WILDING CRAN GALLERY



Grant Shumate

Molten Candleabra, 2022

Stoneware

9 1/4 x 8 1/4 x 8 1/4 inches (23.6 x 21 x 21 cm.)

(GS0027)



Chris Cran 1949

Untitled Ink Drawing No. 15, 2018

Ink on foamcore

14 x 11 inches (35.6 x 27.9 cm.)

(CCR0117)



Jasmin Blasco

01.09.24 (Vase I), 2024

Charcoal on paper

30 x 22 inches (76.2 x 55.9 cm.)

(JB0002)



Jasmin Blasco

01.09.24 (Vase IV), 2024

Charcoal on paper

30 x 22 inches (76.2 x 55.9 cm.)

(JB0003)



John Will

Gold Frame, 2006

Acrylic on canvas with gold frame

20 x 17 inches (50.8 x 43.2 cm.)

(JW0001)

WILDING CRAN GALLERY



Ryan Sluggett
Vanishing Point Performance, 2016
Gouache on poly-mesh
36 x 22 inches (91.4 x 55.9 cm.)
(RS0001)



Christian Eckart
System Collapse 1, 2024
AI assisted unique archival digital UV print on aluminum
22 3/4 x 27 inches (57.8 x 68.6 cm.)
(CE0040)



Robert Moreland
Narrow Ivory Rectangle, 2024
Canvas on wooden panel with paint, tacks and leather hinges
70 x 11 x 6 inches (177.8 x 27.9 x 15.2 cm.)
(RM0029)



Fawn Rogers
Eat You Eat Me #12, 2020
Acrylic on cardboard packaging
11 1/2 x 17 x 3 inches (29.2 x 43.2 x 7.6 cm.) Framed
(FR0044)



Fawn Rogers
Eat You Eat Me #8, 2020
Acrylic on cardboard packaging
11 1/2 x 17 x 3 inches (29.2 x 43.2 x 7.6 cm.) Framed
(FR0040)



Polly Borland
LOVE DOLLS, 2023
Needle point pure wool tapestry, double-sided
37 3/4 x 30 1/2 inches (95.9 x 77.5 cm.)
(PB0002)

WILDING CRAN GALLERY



Sharon Engelstein

Free Wall, 2012

Glazed ceramic and whipped wax

12 x 11 x 13 inches (30.5 x 27.9 x 33 cm.)

(SE0001)



Lindsay Preston Zappas

Untitled Weaving (Marble with Houseplant), 2024

Digital photograph on denim, woven yarn, acrylic and colored pencil on wood

47 x 30 inches (119.4 x 76.2 cm.)

(LPZ0002)



John Simmons

Under the Canopy of Heaven, 2020

Mixed media collage

8 1/2 x 13 inches (21.6 x 33 cm.)

(JSI0024)



Suzanne Wright

Queer Merkabah, 2021

Vinyl, flashe, fleur matte paint, acrylic, linen mounted on birch frame

14 x 17 inches (35.6 x 43.2 cm.)

(SW011)



Suzanne Wright

Light Body, 2022

Flashe, fleur matte and acrylic paint, linen mounted on birch frame

8 x 10 inches (20.3 x 25.4 cm.)

(SW010)

WILDING CRAN GALLERY



Ray Anthony Barrett

In Total Darkness no. 5, 2022

Graphite on paper

24 x 18 inches (61 x 45.7 cm.)

26¼ x 20¼ inches (66.67 x 51.44 cm.) (framed)

(RA0016)



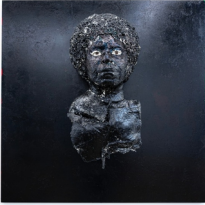
Ferrari Sheppard

Fatima, 2023

Acrylic, charcoal, and 24K gold on canvas

60 x 48 x 2 inches (152.4 x 121.9 x 5.1 cm.)

(FS0015)



Karon Davis

Black on Black Rhyme Tracey, 2024

Plaster strips, glass eyes, steel, wood and metal leaf

36 x 36 x 18 inches (91.4 x 91.4 x 45.7 cm.)

(KD0099)



Francesca Gabbiani

Mutation XLIX, 2023

Ink, gouache, acrylic, and colored paper on paper

35 x 40 inches (88.90 x 101.60 cm)

38¼ x 43¼ inches (97.16 x 109.86 cm) (framed)

(FG0009)



Michael Wilding

Just Thusness, 2023

Bronze

27 x 65 1/2 x 11 inches (68.6 x 166.4 x 27.9 cm.)

(MW0009)

WILDING CRAN GALLERY



Martin Bennett

Variant Flash Painting - A Person Walks Down Some Steps, An Introduction Is Made, 2016

Oil and acrylic on canvas

40 x 30 inches (101.6 x 76.2 cm.)

(MB002)



Catherine Fairbanks

Nurses Pushed Down Blue and Green, 2023

Flashe on canvas

36 x 48 inches (91.4 x 121.9 cm.)

(CF0014)



Marcelyn McNeil

Smalls, Forty Five, 2024

Oil on canvas

24 x 20 inches (61 x 50.8 cm.)

(MM0002)



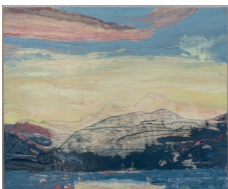
Herald Nix

Untitled Shuswap Lake, B.C., September #62, 2021

Oil on birch panel

8 1/2 x 10 1/2 inches (21.6 x 26.7 cm.)

(HN0161)



Herald Nix

Untitled Shuswap Lake, B.C., August #74, 2020

Oil on birch panel

8 1/2 x 10 1/2 inches (21.6 x 26.7 cm.)

(HN0174)



Herald Nix

Untitled Shuswap Lake, B.C., April #68, 2022

Oil on birch panel

9 1/2 x 11 1/2 inches (24.1 x 29.2 cm.)

(HN0167)

WILDING CRAN GALLERY



Herald Nix

Untitled Shuswap Lake, B.C., April #71, 2022

Oil on birch panel

9 1/2 x 11 1/2 inches (24.1 x 29.2 cm.)

(HN0170)



Mustafa Ali Clayton

Noella, 2022

Earthenware clay, beads, glaze

15 3/4 x 11 x 13 inches (40 x 27.9 x 33 cm.)

(MAC0018)



Jonah Elijah

Green Mask, 2023

Acrylic on plastic hand held mirror

10 1/2 x 7 1/2 inches (26.7 x 19.1 cm.)

(JEX040)



Jonah Elijah

Precision, 2023

Acrylic on plastic hand held mirror

10 1/2 x 7 1/2 inches (26.7 x 19.1 cm.)

(JEX042)



Jonah Elijah

Finger Waves, 2023

Acrylic on plastic hand held mirror

12 x 8 3/4 inches (30.5 x 22.2 cm.)

(JEX043)

WILDING CRAN GALLERY



Jonah Elijah

Bald Black Beauty, 2023

Acrylic on plastic hand held mirror
10 1/2 x 7 1/2 inches (26.7 x 19.1 cm.)
(JEX041)



Jonah Elijah

Bantu Knots, 2023

Acrylic on plastic hand held mirror
12 x 8 3/4 inches (30.5 x 22.2 cm.)
(JEX044)



Natia Lemay

Untitled No. 3, 2024

Graphite, marker and gouache on Yupo paper
20 x 25 inches (50.8 x 63.5 cm.)
(NL0011)



Polly Borland

The Nose, 2023

Needle point pure wool tapestry, double-sided
25 1/2 x 20 3/4 inches (64.8 x 52.7 cm.)
(PB0001)



Vanessa Beecroft

vb.wc.082.17, 2017

Watercolor on paper
9 3/4 x 12 3/4 inches (24.8 x 32.4 cm.)
(VB0018)

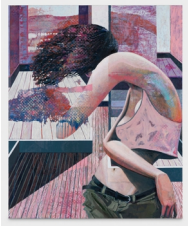


Robert Gunderman

Consul III, 2023

Oil on canvas
24 x 20 inches (61 x 50.8 cm.)
(RG0042)

WILDING CRAN GALLERY



Marty Schnapf
Radio Room, 2022
Oil on canvas
48 x 36 inches (121.9 x 91.4 cm.)
(MS0011)



Elizabeth Malaska
Performer, 2022
Sumi ink, Flashe and oil stick on paper
22 3/4 x 18 3/4 inches (57.8 x 47.6 cm.)
25 1/2 x 21 3/4 inches (64.77 x 55.3 cm.) (framed)
(EM0014)



Timothy Washington
Several Faces One Race, 2009
Mixed media
84 x 12 1/2 x 6 1/2 inches (213.4 x 31.8 x 16.5 cm.)
(TW0040)



Aryo Toh Djojo
Once Upon a Time, 2023
Acrylic and collage on canvas
20 x 24 inches (50.8 x 61 cm.)
(ATO0051)



Erick Alejandro Hernandez
, 2023
Oil, acrylic, graphite, and charcoal on canvas
24 x 30 inches (61 x 76.2 cm.)
(EAH0001)

WILDING CRAN GALLERY



Vanessa Beecroft

ob.wc.080.17, 2017

Watercolor on paper

9 3/4 x 12 3/4 inches (24.8 x 32.4 cm.)

(VB0016)



Robert Gunderman

One to Another, 2023

Oil on canvas

24 x 20 inches (61 x 50.8 cm.)

(RG0043)



Vanessa Beecroft

ob.dw.013.16, 2016

Watercolor on paper

25 x 9 3/4 inches (63.5 x 24.8 cm.)

(VB0017)



Lauren Elder

Golden Cheeked Weaver, 2023

Earthenware, glaze, gold luster

13 1/2 x 7 1/2 x 8 inches (34.3 x 19.1 x 20.3 cm.)

(LE0024)



Elizabeth Malaska

Nape, 2022

Flashe and gouache on paper

13 x 10 1/2 inches (33 x 26.7 cm.)

15 3/4 x 13 1/4 inches (framed)

(EM0009)



Marcelyn McNeil

Smalls, Forty Four, 2024

Oil on canvas

24 x 20 inches (61 x 50.8 cm.)

(MM0003)

WILDING CRAN GALLERY



David "Mr StarCity" White

Surrounded by Love, 2024

Acrylic, charcoal and mixed media

47 x 38 inches (119.4 x 96.5 cm.)

(DW0001)



Ry Rocklen

Tan Bouquet, 2013-2014

Porcelain

13 1/2 x 10 inches (34.3 x 25.1 cm.)

(RR0030)



Ry Rocklen

Black and Grey Armani, 2008-2014

Porcelain

14 1/4 x 10 inches (35.9 x 25.1 cm.)

(RR0020)



Ry Rocklen

Pinky T, 2004-2014

Porcelain

13 3/4 x 12 inches (34.9 x 30.5 cm.)

(RR0025)



Chandler McWilliams

Who does not depart (Ariadne's thread), 2021

Hand-dyed thread, neon tubing, MDF.

20 x 64 inches (50.8 x 162.6 cm.)

(CM0001)